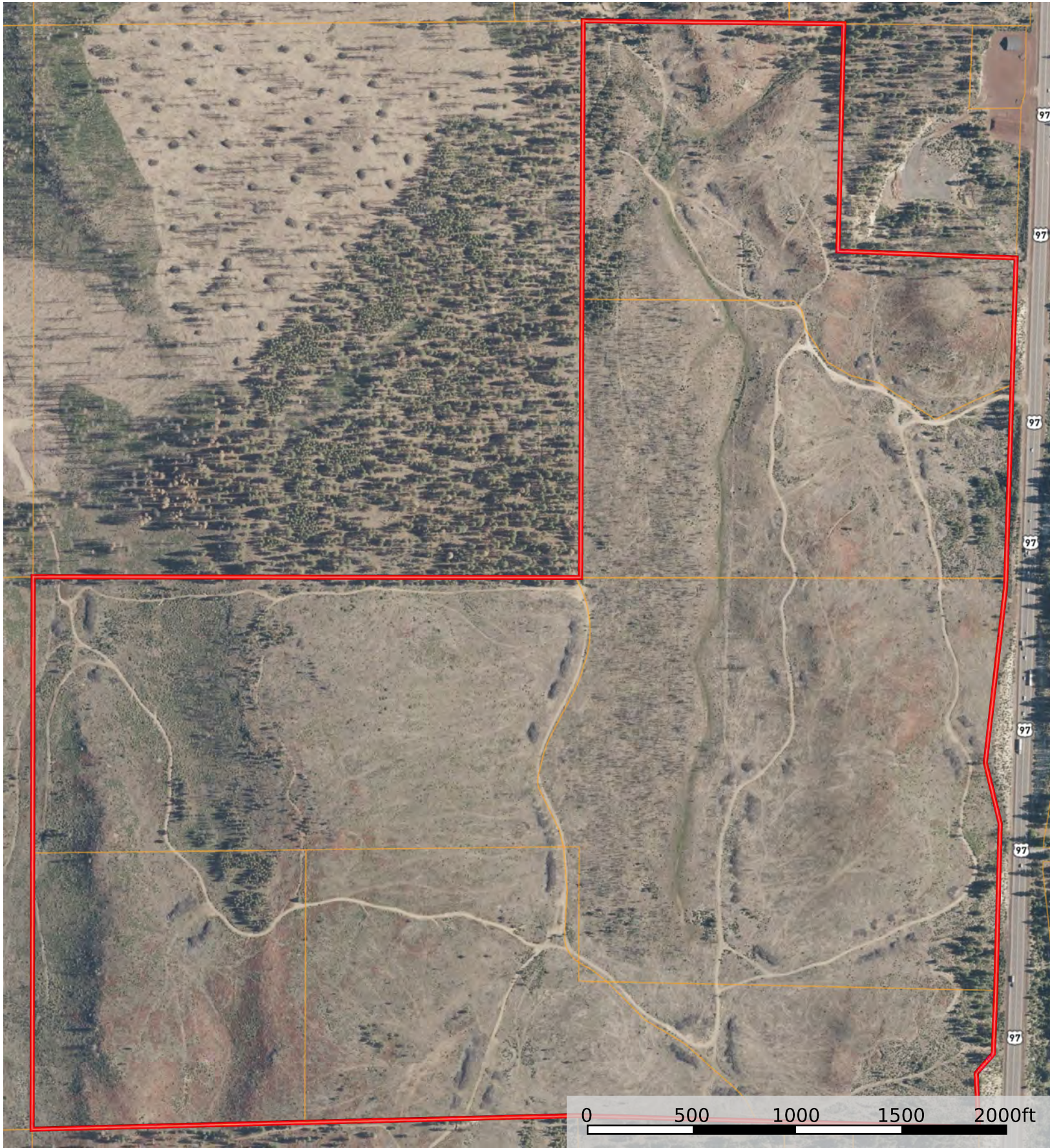



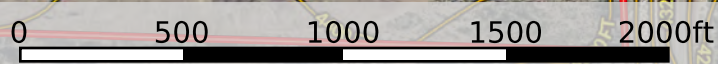
KLAMATH BASIN
T34S R7W Sec. 21 - 381.97 ± Acres



 Boundary

KLAMATH BASIN

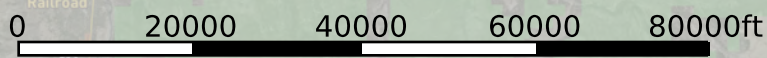
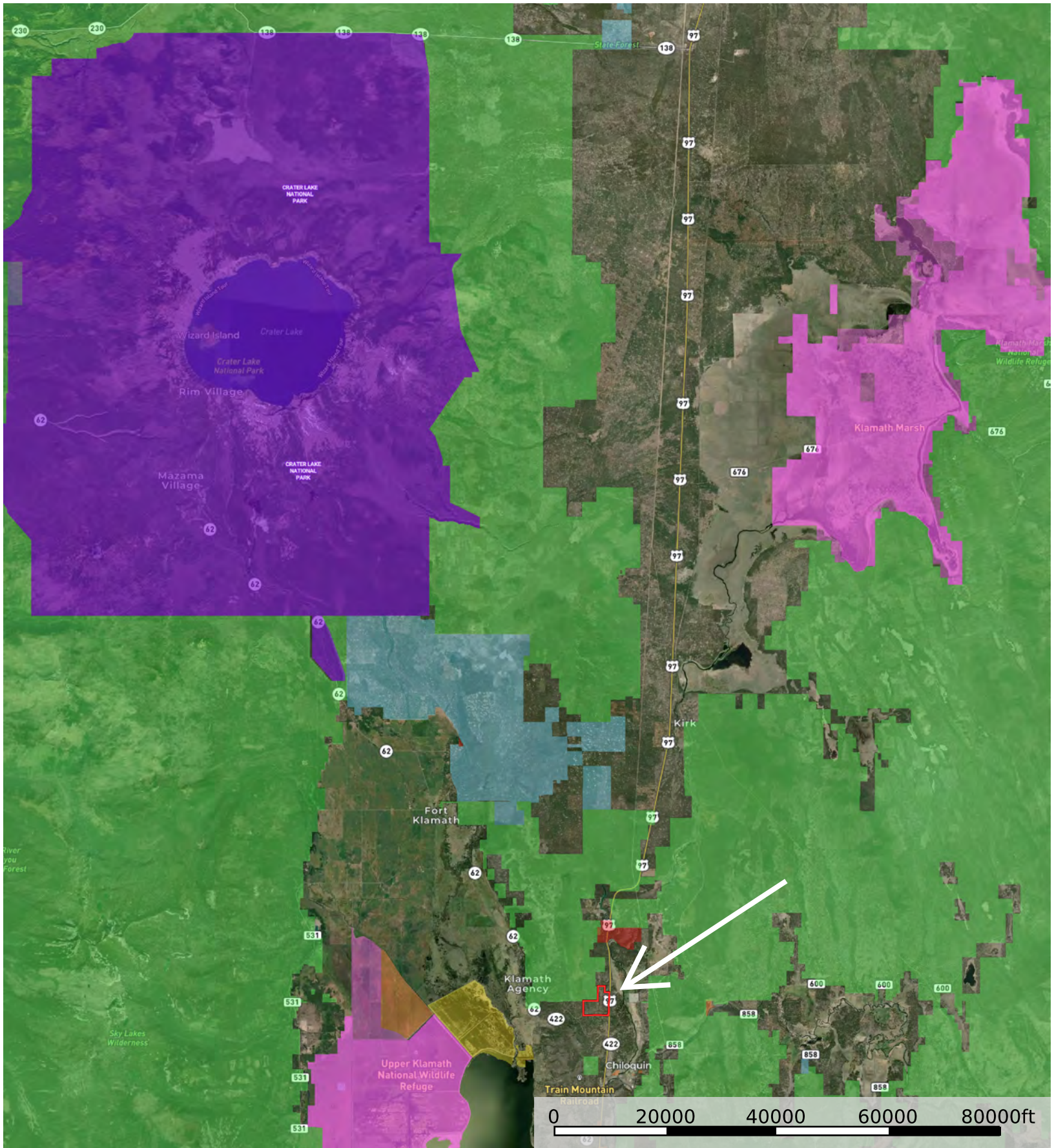
T34S R7W Sec. 21 - 381.97 ± Acres



 Boundary

KLAMATH BASIN

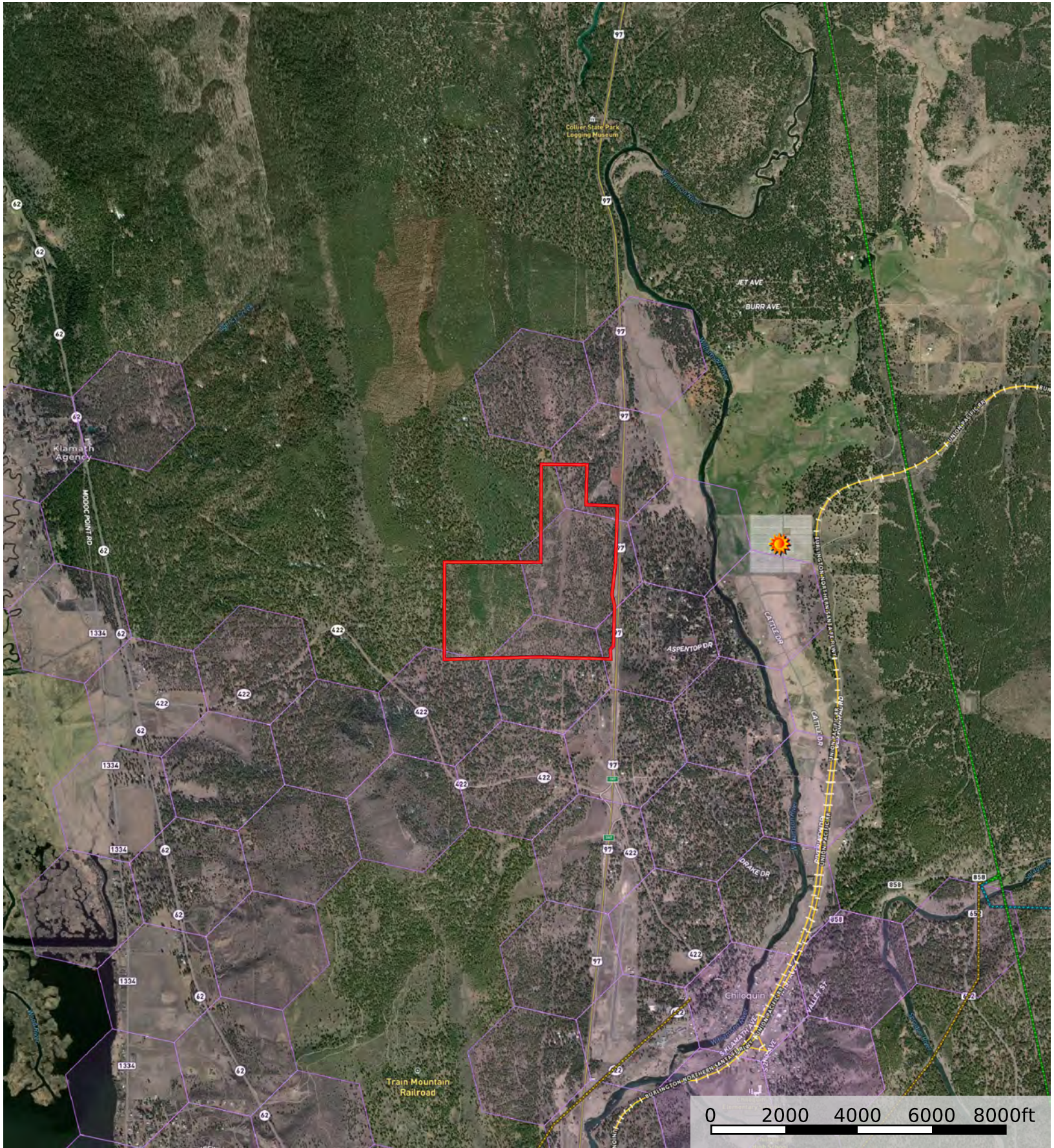
T34S R7W Sec. 21 - 381.97 ± Acres



- Boundary
- Forest Service
- State Land
- Fish and Wildlife
- National Park
- BLM
- Local Government


KLAMATH BASIN

T34S R7W Sec. 21 - 381.97 ± Acres

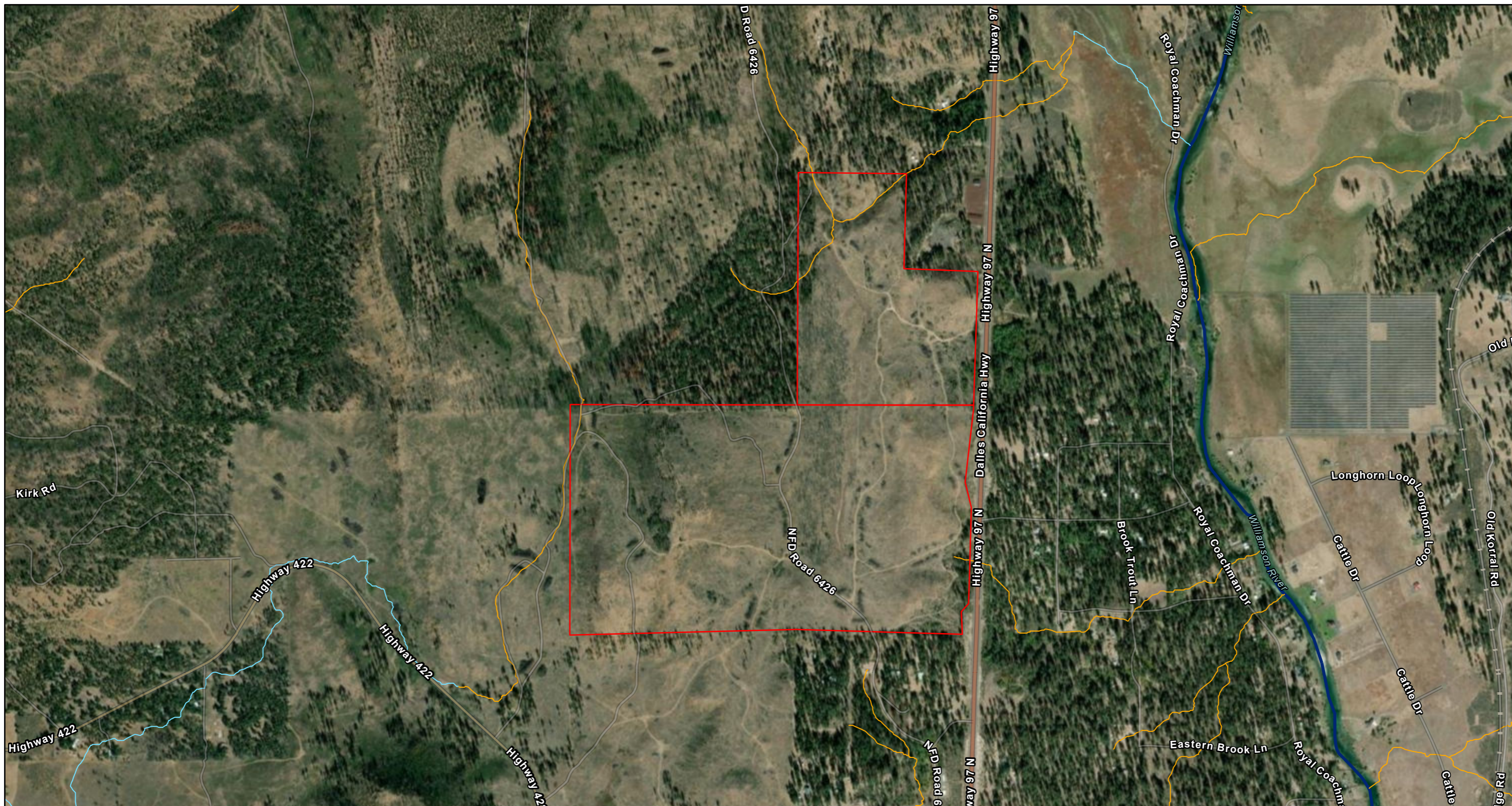


 Boundary **Fiber Optic Service** **Solar Farm** **Train Tracks** **Transmission Lines**



 The information contained herein was obtained from sources deemed to be reliable. Land id® Services makes no warranties or guarantees as to the completeness or accuracy thereof.

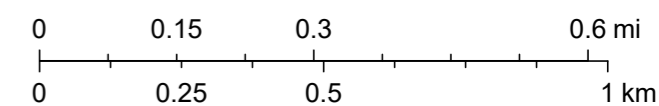
ODF FPA STREAMS MAP



1/31/2026, 5:45:59 PM

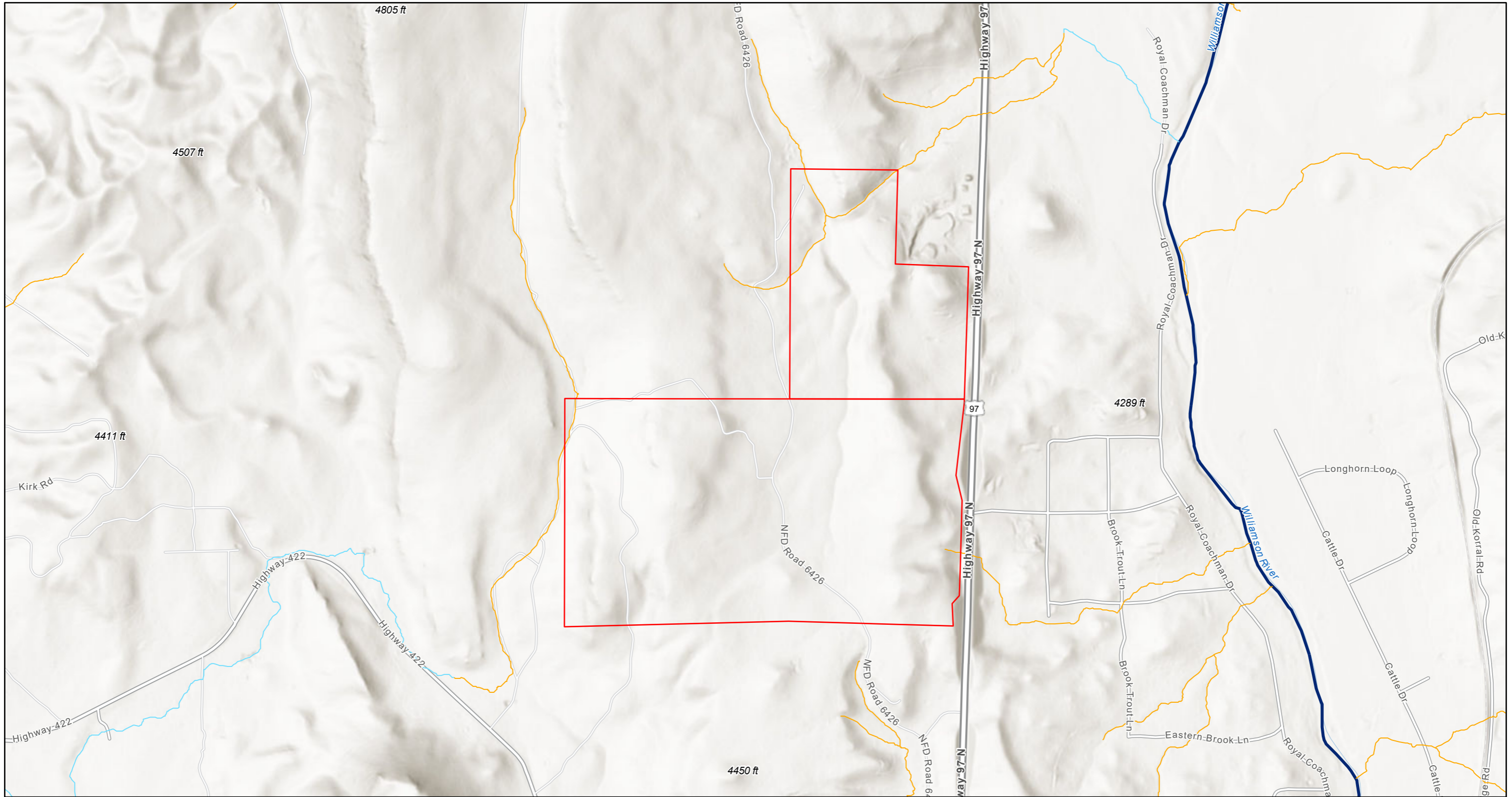
1:18,056

- 4 FPA Flow Line, Fish Presence
- 4 — Fish, Large
- Fish, Small
- Nonfish, Small





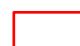

Source: Esri, Vantor, Earthstar Geographics, and the GIS User Community, Sources: Esri, TomTom, Garmin, FAO, NOAA, USGS, © OpenStreetMap contributors, and the GIS User Community

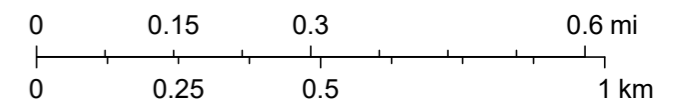
ODF FPA STREAMS MAP



1/31/2026, 5:45:10 PM

1:18,056

-  4 FPA Flow Line, Fish Presence
-  Fish, Small
-  4 Fish, Large
-  Nonfish, Small



Esri, NASA, NGA, USGS, FEMA, Sources: Esri, TomTom, Garmin, FAO, NOAA, USGS, © OpenStreetMap contributors, and the GIS User Community